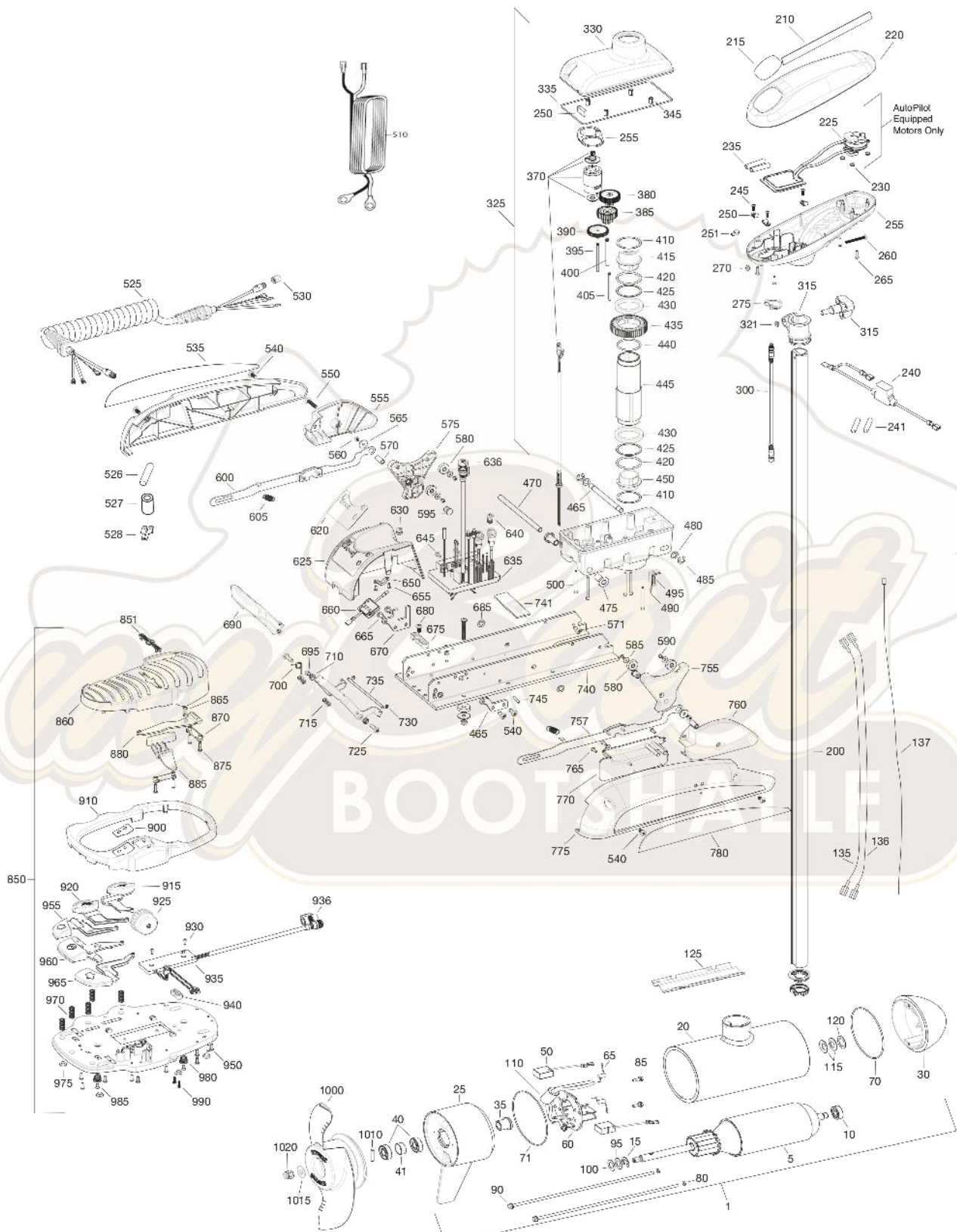


PARTS DIAGRAM

for use with "Q" serial numbers 2-year warranty

TERROVA 112

112 LBS THRUST - 36 VOLT - 52 AMPS - 54"/60"/72" SHAFT



PARTS LIST

TERROVA 112

112 LBS THRUST - 36 VOLT - 54"/60"/72" SHAFT

ITEM	QTY	PART NUMBER	DESCRIPTION
1	1	2777082	36V MOTOR US2 72"/TUBE ASSY
	1	2777081	36V MOTOR US2 60"/TUBE ASSY
	1	2777080	36V MOTOR US2 54"/TUBE ASSY
5	1	2-100-245	ARMATURE ASSEMBLY
10	1	140-014	BEARING
15	1	788-040	RETAINING RING
20	1		CENTER HSG. W/TUBE [INCLUDED IN 200]
25	1	2-300-150	BRUSH END HOUSING ASSY
30	1	9421-245	PLAIN END HSG US2 54"/60"
	1	9421-247	PLAIN END HSG US2 72"
35	1	144-017	FLANGE BEARING
40	2	880-025	SEAL
41	1	725-095	PAPER TUBE - SEAL BORE
50	2	188-095	BRUSH
60	1	9-738-011	BRUSH PLATE ASSEMBLY
65	2	975-045	BRUSH SPRING
		2881450	SEAL & ORING KIT [INCLUDES 40, 70-80]
70	1	701-098	O-RING, MOTOR PLAIN END
71	1	701-107	O-RING, MOTOR BRUSH END
80	2	701-009	O-RING, THRU-BOLT
85	2	2053410	SCREW, 10-32 X 1/2
90	2	830-094	THRU-BOLT 12-24
95	1	990-051	WASHER, STEEL
100	2	990-052	WASHER, NYLATRON
110	1	2307312	FERRITE BEAD
115	2	992-011	WASHER, BELLEVILLE
120	1	990-011	WASHER, SHIM
125	1	582-016	CLIP, RETAINING, LONG
135	1	640-048	LEADWIRE, BLACK 72"
	1	640-044	LEADWIRE, BLACK 60"
	1	640-042	LEADWIRE, BLACK 54"
136	1	640-148	LEADWIRE, RED 72"
	1	640-144	LEADWIRE, RED 60"
	1	640-142	LEADWIRE, RED 54"
137	1	640-317	GROUNDWIRE, BROWN 72"
	1	640-316	GROUNDWIRE, BROWN 60"
	1	640-315	GROUNDWIRE, BROWN 54"
200	1	2777245	TUBE, COMPOSITE 60" FW [INCLUDES 20]
	1	2777247	TUBE, COMPOSITE 72" FW [INCLUDES 20]
210	2	2325665	DECAL, COVER
215	1	2325691	DECAL, CTRL BOX 112 US2
	1	2325689	DECAL, CTRL BOX 112 AUTOPILOT & US2
220	1	2320200	COVER, CTRL BOX
225	1	2324032	CTRL BOARD, COMPASS, AUTOPILOT ONLY
230	3	2302960	GROMMET, COMPASS, AUTOPILOT ONLY
235	2	2065400	WIRE INSULATOR
240	1	2218200	FUSE HOLDER
241	2	2375400	SHRINK TUBE 1/4" OD X 1 3/4"
245	3	2372100	SCREW, 8-18 X .625
250	3	2052510	CABLE CLAMP

ITEM	QTY	PART NUMBER	DESCRIPTION
255	1	2322500	CTRL BOX
260	1	2332102	SCREW, 10-24
265	4	2372100	SCREW, 8-18 X .625
270	1	2333101	NUT, 10-24
275	1	2224700	INSERT - PLUG, US2, SMALL HOLE
	1	2224702	INSERT - PLUG, PD/AP, NO HOLE
	1	2224704	INSERT - PLUG, BLK, I-PILOT LINK, LARGE HOLE
300	1	2211415	UNIVERSAL SONAR 2 EXTENSION CABLE
305	1	2771500	DEPTH COLLAR ASSEMBLY [INCLUDES 315-321]
315	1	2260906	KNOB [INCLUDED IN 305]
320	1	2321702	WASHER [INCLUDED IN 305]
321	1	2323102	NUT [INCLUDED IN 305]
325	1	2997025	STEERING HOUSING [INCLUDES 330-500]
330	1	2326501	STEERING HOUSING TOP
335	1	2324604	O-RING, CASE SEAL
345	4	2305605	ROLL PIN 5/16
350	1	2308601	BREATHER, FILTER
355	1	2328610	CRADLE, MOTOR
370	1	2777025	MOTOR, STEERING ASSY
380	1	2302255	GEAR, CLUSTER 3RD STAGE
385	1	2302250	GEAR, CLUSTER 2ND STAGE
390	1	2302245	GEAR, CLUSTER 1ST STAGE
395	1	2302610	SHAFT, GEAR 1ST STAGE
400	1	2302620	SHAFT, GEAR 3RD STAGE
405	1	2302615	SHAFT, GEAR 2ND STAGE
410	2	2321704	WASHER, THRUST
415	1	2321515	LINER, OUTPUT TUBE
420	2	2324608	O-RING, 224
425	2	2321720	SHIM, O-RING
430	2	2327308	BEARING, BALL SEALED
435	1	2322200	GEAR, OUTPUT
440	1	2324601	O-RING, OUTPUT GEAR
445	1	2322030	TUBE, OUTPUT MACHINED
450	1	2321510	COLLAR, DRIVE, BOTTOM
455	1	2326506	STEERING HOUSING, BOTTOM
465	1	2322600	PIN, LATCH, ZP
470	1	2322602	PIN, PIVOT, ZP
475	2	2327310	BUSHING, PIVOT PIN
480	2	2321702	WASHER, FLAT .375
485	2	2263011	E-RING .375
490	2	2322702	SPRING, LATCH PIN
495	1	2323410	SCREW, 8-32 X .75
500	7	2323408	SCREW, 8-32 X 2
510	1	2090651	LEAWIRE, 10 GA
525	1	2991272	COIL CORD, US2, 54"/60"/72"
526	1	2325401	SHRINK TUBE 3/4" ID X 2" W/ADHS
527	1	2307313	BEAD-FERRITE
528	1	2320710	TERMINAL-AMP (T-TAB)
530	1	2320202	CAP, DUST, COIL CORD, NON-AP ONLY
535		2325641	DECAL, SIDEPLATE, LEFT

PARTS LIST

TERROVA 112

112 LBS THRUST - 36 VOLT - 54"/60"/72" SHAFT

ITEM	QTY	PART NUMBER	DESCRIPTION
540	4	2323404	SCREW, 1/4-20
545	1	2321915	SIDEPLATE, LEFT
550	2	2323403	SCREW, 1/4-20 X .375
555	1	2321927	SKID, LEFT
560	2	2323422	SCREW, 10-24 X .375
565	2	2321700	WASHER, #10 SS
570	2	2322920	STAND-OFF, ALUM PLAIN
571	2	2323405	SCREW, 1/4-20 X 1/2"
575	1	2323907	RAMP, 4-1/2" LEFT
■	4	2325115	PAD, RUBBER REST
585	4	2321706	WASHER, #8
590	4	2323412	SCREW, 8-18 X .25
595	2	2324705	INSERT, RAMP
600	1	2994202	ARM, RELEASE, LEFT
■	2	2322710	SPRING, EXTENSION
■	1	2770250	COVER, SPEED CONTROL WITH DECAL
620	1	2325650	DECAL, SPEED CONTROL
625	1	2320210	COVER, SPEED CONTROL
630	1	2322901	STRAIN RELIEF
635	1	2324017	CONTROL BOARD, 24-36V (2 NETWORK PLUGS)
	1	2324023	CONTROL BOARD, 24-36V (1 NETWORK PLUG)
■		2884050	SWITCH-REED REPAIR KIT
636	1	2320208	DUST PLUG
640	1	2320203	CONTROL BOARD DUST CAP
645	2	2323406	SCREW, 10-24 X .50
650	1	2321315	HOLDER, CONNECTOR
655	2	2332103	SCREW, 6-20 X .375
660	1	2074072	BATTERY METER, 36V
665	4	2323402	SCREW, 1/4-20 X .375
670	1	2321940	BRACKET, STRAIN RELIEF
675	1	2321310	STRAIN RELIEF, WIRE
680	1	2323405	SCREW, 1/4-20 X .5
685	2	2013100	SPEED NUT, .375
690	1	2320215	HANDLE, RELEASE COVER
695	1	2301700	BUSHING,
700	1	2322701	SPRING, RELEASE HANDLE
710	1	2320400	HANDLE, RELEASE FW
715	2	2322712	SPRING, RELEASE HANDLE
720	2	2322604	BUSHING, HANDLE
725	2	2332104	SCREW, 1/4-20 X .625
730	2	2323000	E-CLIP, 3/16, SS
735	1	2322606	PIN, FOLLOWER, HANDLE
740	1	2321905	BASE EXTRUSION, MCHN
741	1	2321721	SHIM, 2 X 4 X .025"
745	2	2322912	SPRING PIN,
750	1	2321950	BRACKET, SIDEPLATE
755	1	2323902	RAMP, 4-1/2" RIGHT
757	1	2994204	ARM, RELEASE, RIGHT
760	1	2321922	SKID, RIGHT
765	3	2301310	SCREW, 8-18 X .5

ITEM	QTY	PART NUMBER	DESCRIPTION
770	1	2320220	COVER, ACCESS, FW
775	1	2321910	SIDEPLATE, RIGHT
780	1	2325640	DECAL, SIDEPLATE, RIGHT
850	1	2994720	FOOT PEDAL [INCLUDES 815-990]
851	1	2326710	PLUG, FOOT PEDAL
860	1	2324400	PEDAL, HEEL-TOE
865	1	2322714	SPRING, MOMENTARY
870	2	2321300	CLAMP
875	4	2223430	SCREW, 8 X .75
880	1	2328600	FLEX FINGER
885	1	2323710	MOM. BUTTON, LEFT
900	1	2325660	DECAL, FOOT PEDAL
910	1	2320205	COVER, HEEL-TOE
915	1	2323725	BUTTON, AP
920	1	2323715	BUTTON, MOM/CON
925	1	2320100	KNOB, SPEED, FOOT PEDAL
930	2	2332103	SCREW, 6-20 X .375
935	1	2324021	CONTROL BOARD, FT PEDAL
936	1	2320207	DUST CAP
940	1	2322900	STRAIN RELIEF, FT PEDAL
945	1	2324500	BASE PLATE, FT PEDAL
950	10	2301310	SCREW, #8 X .5
955	1	2323730	BUTTON, STEER, LEFT
960	1	2323735	BUTTON, MOMENTARY
■	1	2323731	BUTTON, STEER, RIGHT
■	5	2322704	SPRING, FOOT PEDAL
975	1	2994859	BUMPER, BAG ASSY
980	2	2322706	SPRING, BARREL
985	2	2323420	SCREW, 8-18 X .375
990	2	2372100	SCREW, 8-18 X .625
■	1	2994859	BUMPER, BAG ASSY
■		1378160	PROPELLER KIT WW2 [1000-1020]
■		2994876	PROPELLER BAG ASSY [1010-1020]
1000	1	2341160	PROPELLER WW2
1010	1	2262658	DRIVE PIN, LARGE
1015	1	2091701	WASHER, PROP, LARGE
1020	1	2093101	NUT, NYLOCK, PROP, LARGE
■		2994864	MOUNTING HARDWARE BAG ASSY

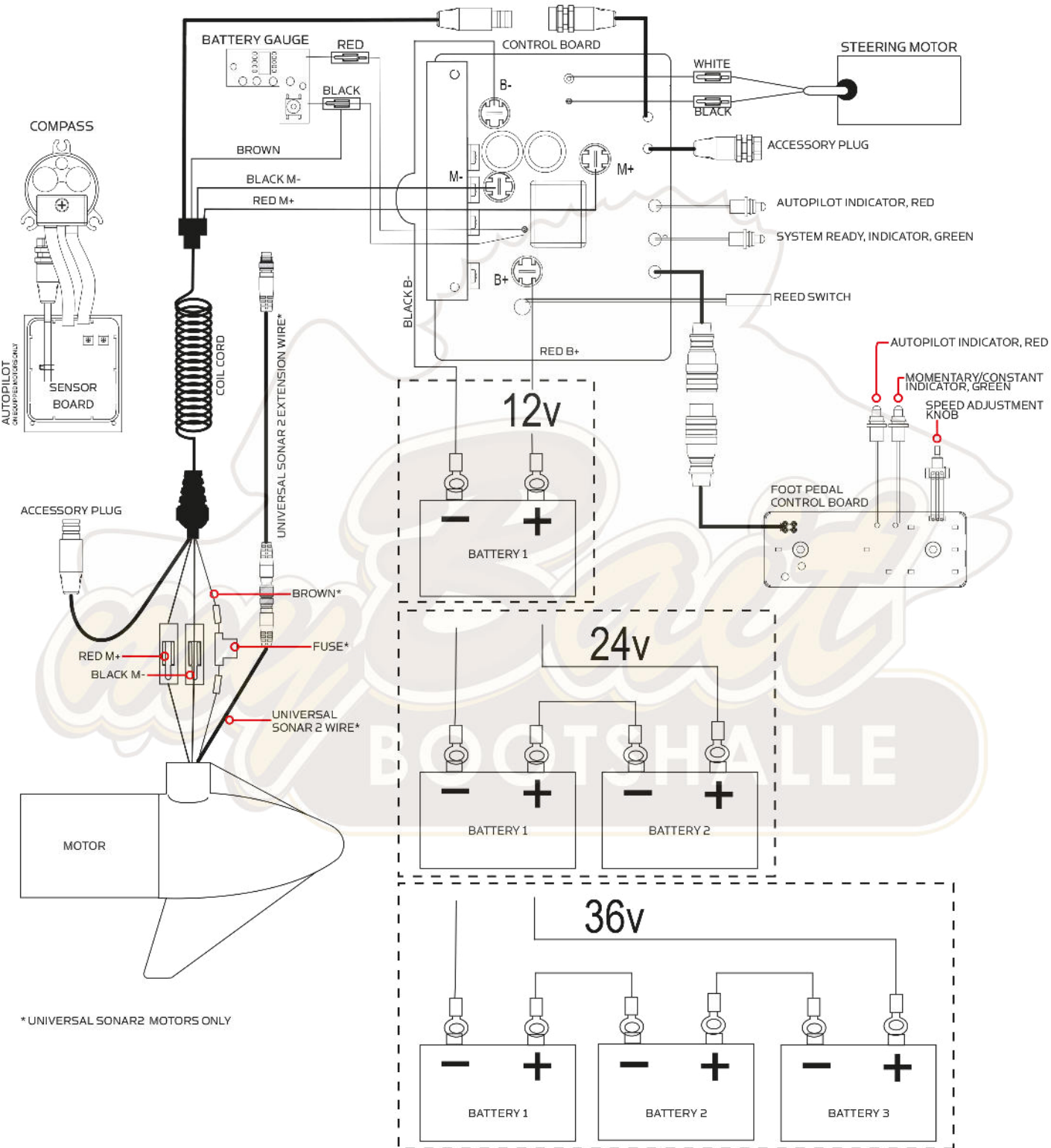
■ THIS ITEM IS PART OF AN ASSEMBLY.

*THIS ITEM IS PART OF A KIT AND ONLY LISTED FOR VIEWING PURPOSES.

MOTOR WIRING DIAGRAM

NOTE: This is a universal, multi-voltage diagram. Double check your motor's voltage for proper connections. Over-Current Protection Devices not shown in this illustration.

Terrova 112 is 36-volts only!



* UNIVERSAL SONAR2 MOTORS ONLY