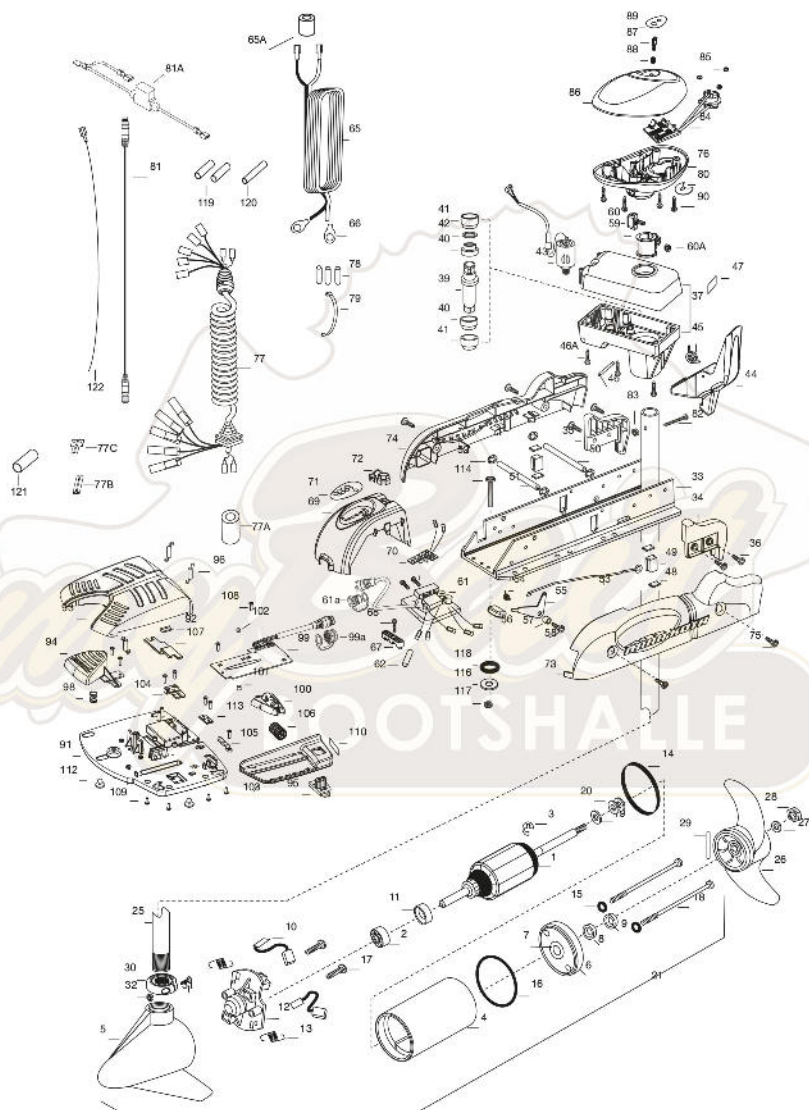


AUTOPILOT 70  
70 LBS THRUST  
24 VOLT 42 AMPS  
54" OR 60" SHAFT

for use with "P" serial numbers  
2-year warranty



In the U.S.A., replacement parts may be ordered directly from MINN KOTA Parts Dept., 121 Power Drive, P.O. Box 8129 Mankato, Minnesota 56002-8129. In Canada, parts may be ordered from any of the Canadian Authorized Service Centers shown on the enclosed list. Be sure to provide the MTR# and serial numbers of your motor when ordering parts. Please use the MINN KOTA. No dejar de incluir el número del MODELO y el número de SERIE del motor para el cual conect part numbers from the parts list. Payment for any parts ordered from the MINN KOTA parts department, may be by cash, personal check, Discover Card, MasterCard or VISA. To solicitar las piezas. Usar siempre los números de pieza correctos indicados en la lista de piezas. order, call 1-800-227-6433 or FAX 1-800-527-4464.

1	2-100-119	ARMATURE ASSEMBLY 24V VARS TXT	*42	2304803	O-RING	79	2256300	TIE WRAP-5" BLACK	119	SHRINK TUBE-1/2" OD X 2"
2	140-010	BALL BEARING	43	2307050	MOTOR- DRIVE HOUSING HIGH SPD	80	2224702	INSERT- PLUG	120	2375400 SHRINK TUBE-1/4" OD X 1-3/4"
3	788-015	RETAINING RING	44	2307201	LATCH HANDLE PDI/AP		2224700	INSERT- PLUG US2	121	SHRINK TUBE-3/4" ID X 2" W/ADHS
4	2-200-005	HOUSING ASSEMBLY CENTER 3.62 TXT	45	2302750	SPRING- LATCH TORSION PDI/AP	81	2211415	UNIVERSAL SONAR II EXTENSION CABLE	122	LEADWIRE, BROWN
5	421-065	HOUSING -BRUSH END 3.62 TXT	46	2302627	PIN- ROLL ZINC	81A	2218200	FUSE HOLDER, US2 MOTORS ONLY		
	9421-168	HOUSING BRUSH END 3.62 SONAR 54"/60"	46A	2303407	SCREW - DRIVE HOUSING [6 EA]	82	2323102	SCREW-10-24 X 1-3/4 PPH Z/P		
6	2-400-101	PLAIN END HOUSING ASSEMBLY 3.625	47	2305584	DECAL-STOW/DEPLOY	83	2333101	NUT-HEX 10-24 ZCP		
7	144-049	BEARING - FLANGE (SERVICE ONLY)	48	2305110	PAD-PIVOT SUPT [4.EA]	84	2094058	CNTRL BRD/CMPSS ASSEMBLY-AP		
8	880-003	SEAL	49	2305103	PIVOT PAD- NEW MTR'L [2.EA]	85	2302960	GROMMET-COMPASS [3.EA]		
9	880-006	SEAL WITH SHIELD	50	2300500	PIN-LATCH	86	2300237	CONTROL BOX COVER		
10	188-037	BRUSH ASSEMBLY [2.EA]	51	2300510	PIN-PIVOT	87	2304082	ACTUATOR- SWITCH ON/OFF A/P		
11	725-035	BRUSH RETENTION- PAPER TUBE	52	2013100	NUT-SPEED [4.EA]	88	2302752	SPRING- ACTUATOR PDI/AP SS		
12	738-036	BRUSH PLATE W/HOLDER	53	2303612	ROD-RELEASE RT/AP S	89	2305653	DECAL- COVER 70 PD/ AP		
13	975-040	SPRING - TORSION [2.EA]	54	2322700	SPRING-RELEASE LEVER		2305654	DECAL - COVER 70 PD / AP / US		
14	337-036	GASKET	55	2303710	LEVER-RELEASE	90	2372100	SCREW-8-18 X 5/8 THD CUT [4.EA]		
15	701-008	O-RING, THRU-BOLT [2.EA]	56	2300101	RELEASE-KNOB	■	2994725	FOOT PEDAL ASSEMBLY		
16	701-081	O-RING	57	2301700	SPACER-RELEASE LEVER	91	2304505	FOOT PEDAL BASE		
17	830-007	SCREW-8-32 [2.EA]	58	2303430	SCREW-1/4-20 X 5/8	92	2308501	WEAR PLATE FOOT PDL		
18	830-008	THRU-BOLT 10-32X3/2 [2.EA]	59	2031522	COLLAR- DRIVE (W/INSERT)	93	2300255	FOOT PEDAL, CORDED UPPER		
19	990-067	WASHER- STEEL THRUST	60	2011365	SCREW-COLLAR/NEW KNOB	94	2303723	BUTTON, MOMENTARY		
20	990-070	WASHER - NYLATRON [2.EA]	60A	2323104	NUT	95	2303722	BUTTON, MOM/CON		
21	2096031	MOTOR ASSEMBLY 24V 3.62 54"	61	2304068	CONTROL BOARD ASSEMBLY- 24V PDI/AP	96	2302730	SPRING-LONG-UPPER PEDAL [3.EA]		
22	2096032	MOTOR ASSEMBLY 24V 3.62 60"	61A	2320208	DUST PLUG	98	2302732	SPRING-LOWER PEDAL		
	2106035	MOTOR ASSEMBLY US2 24V 3.62 54"	62	2355410	SHRINK TUBE-3/8 ODX2	99	2304052	CONTROL BOARD ASSEMBLY-FT PDL		
	2106046	MOTOR ASSEMBLY US2 24V 3.62 60"	64	2303434	SCREW-8-32 X 5/8 [3.EA]	99A	2302027	DUST CAP		
25	2032076	TUBE-CARBON COMPOSITE 54"	65	2090651	LEADWIRE IOGA 44"	100	2308620	SLIDER, SPEED		
	2032074	TUBE-CARBON COMPOSITE 60"	65A	2307310	BEAD - FERRITE (CE MODELS ONLY)	101	2308409	MAGNET, 1/4 X 1/4		
■	1378131	PROPELLER KIT	66	2020700	TERMINAL RING [2.EA]	102	2778408	MAGNET, 1/4 X 1/8		
26	2091180	PROPELLER WWEDGE 2	67	2321310	STRAIN RELIEF- BRACKET PDI/AP	103	2300252	COVER, SPEED SELECTOR		
27	2151726	WASHER-5/16 SS	68	2323405	SCREW-1/4-20 X 5/8	104	2308606	SWITCH, DOUBLE FINGER		
28	2053101	NUT-PROP NYLOC	69	2306555	HOUSING- CENTER PDI/AP	105	2308608	SWITCH, SINGLE FINGER		
29	2092600	PIN-DRIVE	70	2074071	BATTERY GAUGE - 24 VOLT	106	2307900	WHEEL, SPEED		
30	2301545	COLLAR- LATCH PD/AP	71	2318605	DECAL, BATTERY GAUGE	107	2308625	SLIDER, STEERING		
31	2303434	SCREW- 8-32X5/8 MACH PHCR	72	2302935	STRAIN RELIEF-DR. HOUSING	108	2302100	SCREW-6-20 X 1/2 [9.EA]		
32	2303112	NUT 8-32 NYLOC SS	73	2303960	SIDEPLATE (RIGHT)PD MK	109	2372103	SCREW-6-20 X 3/8 [4.EA]		
33	2301936	EXTRUSION- BASE MACHINED	74	2303965	SIDEPLATE(LEFT)PD MK	110	2318600	DECAL, ON/OFF SWITCH		
34	2303932	MOTOR REST- RIGHT 3-5/8	75	2303430	SCREW-1/4-20 X 5/8 - [4.EA]	112	2994859	BAG ASSEMBLY- 5 RUBBER BUMPERS		
35	2303937	MOTOR REST- LEFT 3-5/8	76	2302515	CONTROL BOX PD/AP	113	2302907	STRN RLF PD PP		
36	2303430	SCREW 1/4-20X5/8 SELF TAP [4.EA]	77	2991285	COIL CORD W/STRAIN RELIEF 48, 54"	■	2994864	BAG ASSEMBLY - (BOLT,NUT,WASHERS)		
37	2771826	DRIVE HOUSING PD V2		2991287	COIL CORD W/STRAIN RELIEF 60"	*114	2263462	BOLT-MOUNTING-1/4X2 W/STG [6.EA]		
■	2882011	BUSHING/OUTSHAFTKIT (INCLUDES 39-42)	77A	2307313	FERRITE BEAD	*116	2261713	WASHER-1/4 [6.EA]		
*39	2302010	DRIVE HOUSING OUTPUT SHAFT	77B	2302715	ADAPTER-TAB .25 F-F	*117	2263103	NUT NYLOC 1/4-20 MTG [6.EA]		
*40	2307304	BUSHING- INNER [2.EA]	77C	2302010	TERMINAL-AMP (T-TAB)	*118	2301720	WASHER-MOUNTING RUBBER [6.EA]		
*41	2307305	BUSHING- OUTER [2.EA]	78	2065400	WIRE INSULATOR-LGE 1-3/4 [3.EA]	■	2888460	SEAL & ORING KIT		

\* This item is part of an assembly. This item cannot be sold separately due to machining and/or assembly that is required.

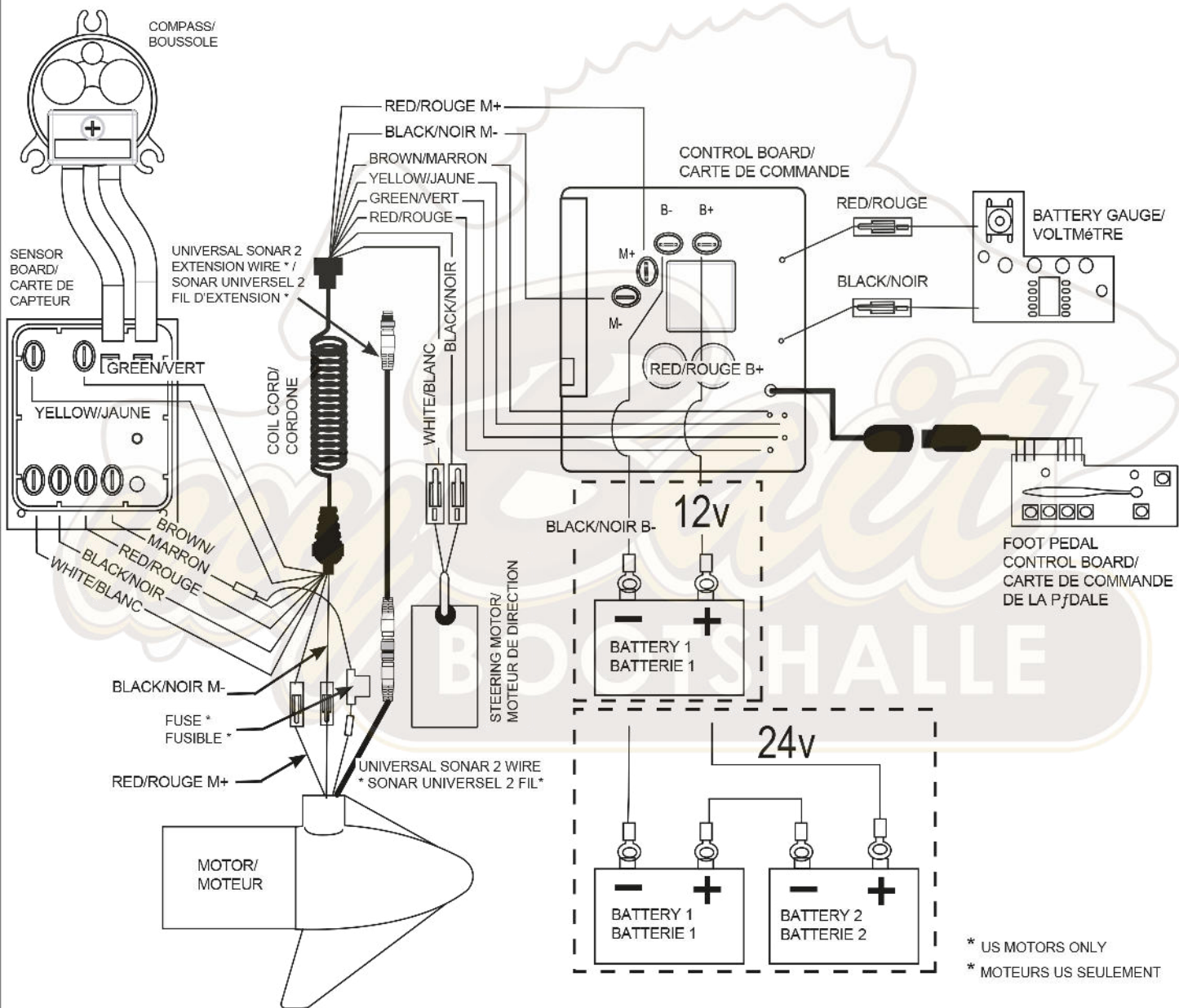
PIN 2314958

REV. U ECN 34323 12-12

# 12-24 VOLT MODELS

**THIS IS A UNIVERSAL MULTI-VOLTAGE DIAGRAM. DOUBLE CHECK YOUR MOTORS VOLTAGE FOR PROPER CONNECTIONS..**

70 AutoPilot is 24-volt only!



\* US MOTORS ONLY  
\* MOTEURS US SEULEMENT